

## TRDI SERIES DIRECT / INDIRECT LED TROFFER

Client:  
 Project:  
 Type:  
 Quantity:

### CONSTRUCTION

22-gauge metal frame, 95% reflective white polyester powder coat bonded to phosphate-free multi-stage pretreated metal. All parts painted after fabrication to facilitate installation, increase efficiency and inhibit corrosion. All corners are rounded for safe handling. Multiple wiring entrances on driver enclosure for easy access. Integral T-bar clips for installation into T-grid ceilings.

### OPTICS

Edgelit design with semi-transparent optic lens offers exceptional direct / indirect distribution and maximum visual comfort.

### ELECTRICAL

Long-life LEDs, coupled with a high-efficiency driver, provide superior illumination for extended service life. Greater than 70% LED lumen maintenance at 60,000 hours (L70>60,000).  
 Selectable lumen and CCT technology allows easy field-adjustable capability, luminaire ships with maximum output and 4000K CCT setting.  
 All CCTs are within 3 MacAdam ellipses.  
 Driver operates at 120-277V input, 0-10V dimmable driver, down to 10%.

### CONTROL (OPTIONAL)

CONTROL-XFAC AVI-ON Bluetooth Zone Controller Adapter  
 CONTROL-BLE-620 Bluetooth Wireless Fixture Controller for CCT Tuning, Dimming, Grouping, Scheduling Features (ALS Control Mobile App)

### MOUNTING

Designed to accommodate lay-in ceilings, Slot T, and T-bar suspension system for 5/8" and 3/8" width.  
 Built-in earthquake clips come standard.  
 Plaster or sheetrock installations, select flange kit.

### STANDARD FINISH

High Reflective White finish.

### CERTIFICATION

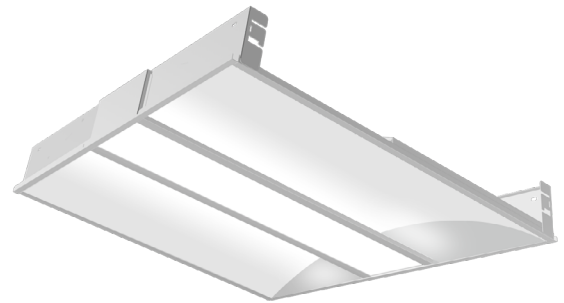
Damp location label standard.  
 Meets Buy America Act requirements.  
 US Patented Product  
 All luminaires are built to UL1598 standards and bear appropriate cULus labels.  
 For Emergency application, equipment with UL924 certified battery packs.  
 DLC® Premium (DesignLights Consortium Qualified).

### WARRANTY

Standard 5 year warranty.



TRDI-2



### SHIPPING DATA

Product	Measurement	Weight
TRDI-2	24"L x 24"W x 8"H	6 lb
TRDI-4	48"L x 24"W x 8"H	14 lb



## TRDI SERIES DIRECT / INDIRECT LED TROFFER

ORDER INFORMATION					EXAMPLE: TRDI 2
-------------------	--	--	--	--	-----------------

Fixture	Series	Model	Finish	Input
	TRDI		blank	blank

Mounting

Accessories  
Options

A	SERIES
---	--------

TRDI	Selectable Lumen and CCT Direct / Indirect LED Troffer
------	--

B	MODEL
---	-------

Code	Size	Power	CCT	Output
2	2x2	20W / 30W / 40W	3000K / 3500K / 4000K	up to 4400lm
4	2x4	30W / 40W / 50W	3000K / 3500K / 4000K	up to 5500lm

C	FINISH
---	--------

blank	White
-------	-------

D	INPUT
---	-------

blank	120-277V, 0-10V Dimming
-------	-------------------------

G	MOUNTING
---	----------

blank	Standard lay-in
MOUNT-LP-22-FGK	1.52" Tall 2x2 Flange Kit (Plaster, Sheetrock or Drywall)
MOUNT-LP-24-FGK	1.52" Tall 2x4 Flange Kit (Plaster, Sheetrock or Drywall)

H	ACCESSORIES/OPTIONS
---	---------------------

AIA	Assembled in America, compliant with BAA (COTS)
EMB-H08170**	90-Minute Self-Diagnostic Emergency Battery 8W 100-347VAC Input 170VDC Output
EMB-H18170**	90-Minute Self-Diagnostic Emergency Battery 18W 100-347VAC Input 170VDC Output
EMB-H40170**	90-Minute Self-Diagnostic Emergency Battery 40W 100-347VAC Input 170VDC Output
CONTROL-XFAC*	AVI-ON Bluetooth Zone Controller Adapter
CONTROL-BLE-620*	Bluetooth Wireless Fixture Controller for CCT Tuning, Dimming, Grouping, Scheduling Features (ALS Control Mobile App)
GTD-ESRLUD***	Emergency Battery Generator Transfer Device 120-277 VAC Input
-C	3/8" x 6FT Steel Flex 5-18AWG Solid 6' leads BLK/WH/GRN/PUR/PNK & 3/8" Die Cast Screw-In Locknut Connectors

\*see page 4 for sensor spec

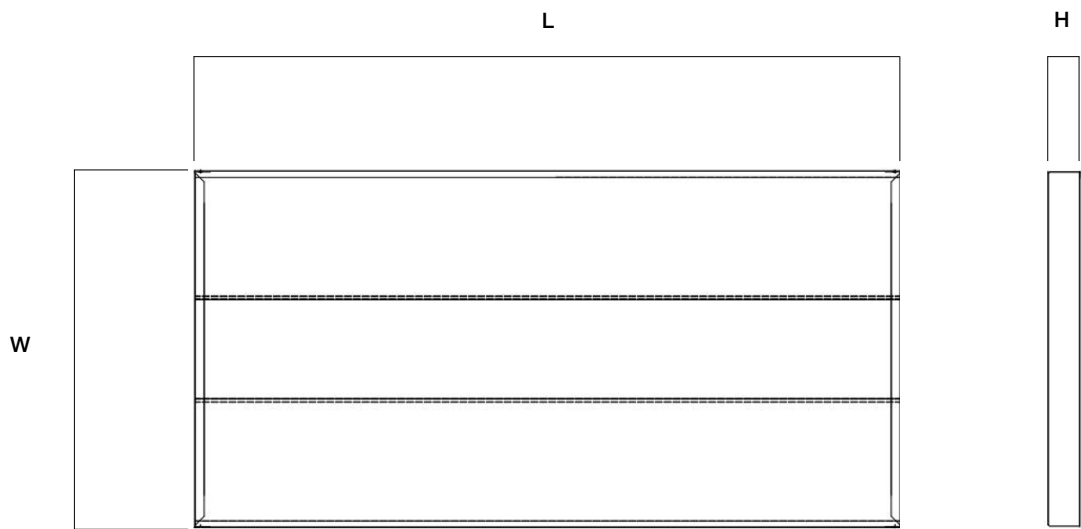
\*\*see page 5 for emb spec

\*\*\*see page 8 and 9 for GTD spec

TRDI SERIES DIRECT / INDIRECT LED TROFFER

DIMENSIONS

Model	W	L	H
TRDI-2	23.76" (603mm)	23.76" (603mm)	3.5" (89mm)
TRDI-4	23.76" (603mm)	47.80" (1213mm)	3.5" (89mm)



## TRDI SERIES DIRECT / INDIRECT LED TROFFER

### PERFORMANCE DATA

SYSTEM WATTS	SIZE	VOLTAGE	LUMEN	LPW	QTY ON PALLET
20W	2x2	120-277V	2200	110	70
30W	2x2	120-277V	3300	110	70
40W	2x2	120-277V	4400	110	70
30W	2x4	120-277V	3300	110	40
40W	2x4	120-277V	4400	110	40
50W	2x4	120-277V	5500	110	40

### SENSOR SPEC

Model	Type	Mounting	Coverage	Input	Function	Programmable
CONTROL-XFAC (see page 6 for detail)	Fixture Controller	-	-	12V DC	Bluetooth Mesh On/Off/Dimming Scheduling	AVI-ON Bluetooth Mobile App
CONTROL-BLE-620 (see page 7 for detail)	Fixture Controller	Integral to Fixture	-	12V DC	CCT Tuning Dimming Grouping Time Schedule	ALS Control Bluetooth Mobile App



CONTROL-BLE-620

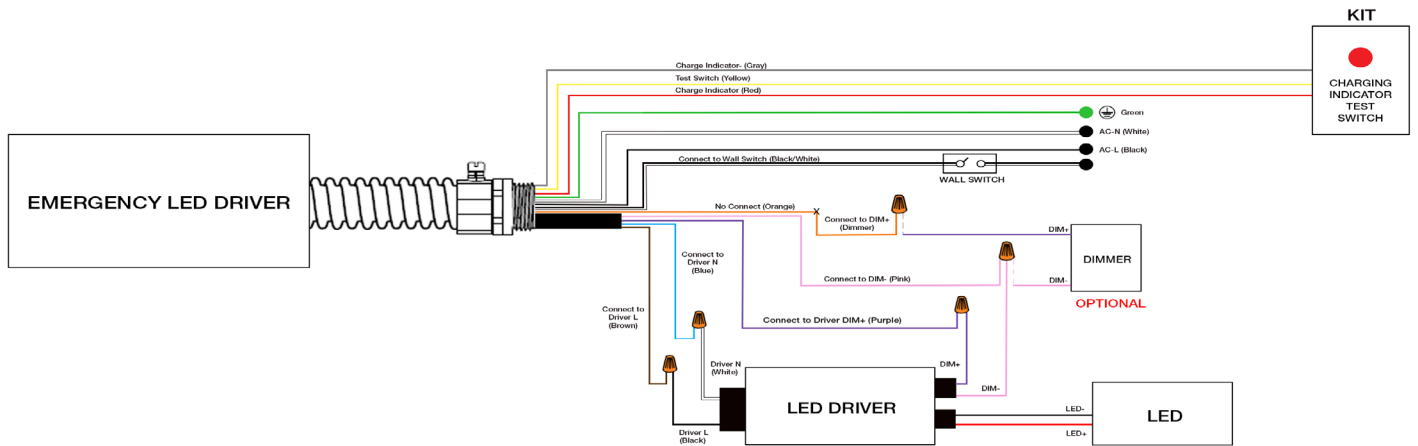


CONTROL-XFAC

## TRDI SERIES DIRECT / INDIRECT LED TROFFER

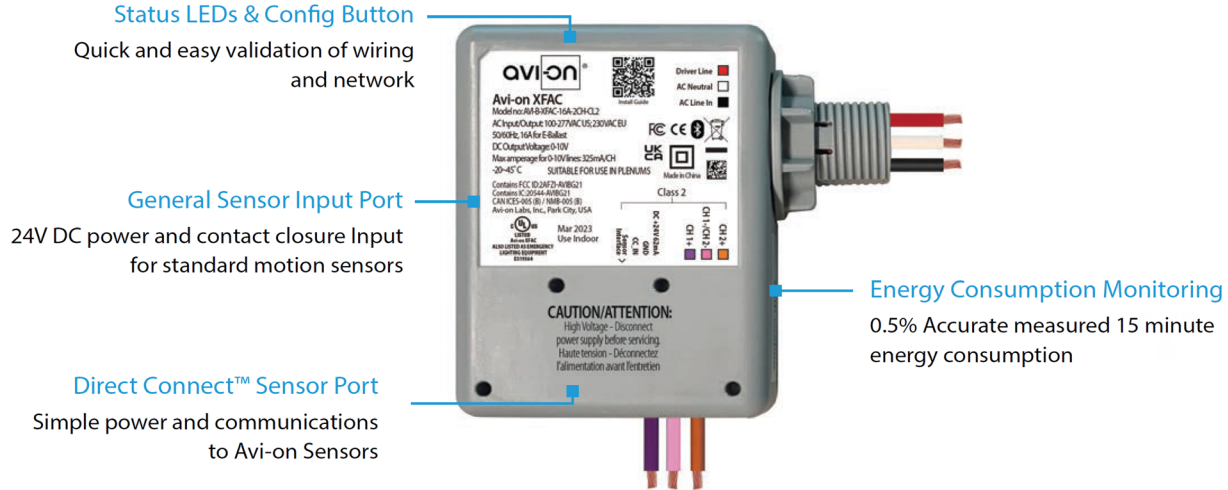
### EMB SPEC

Model	Compatible Fixture	Battery Capacity	Input	Output	Output Power	Operating Temp	Installation
EMB-H08170	TRDI-2	90mins	100-347VAC	170VDC	8W	0°C ~ 50°C 32°F ~ 122°F	Factory or Field Install
	TRDI-4						
EMB-H18170	TRDI-2	90mins	100-347VAC	170VDC	18W	0°C ~ 50°C 32°F ~ 122°F	Factory or Field Install
	TRDI-4						
EMB-H40170	TRDI-2	90mins	100-347VAC	170VDC	40W	0°C ~ 50°C 32°F ~ 122°F	Factory or Field Install
	TRDI-4						



## TRDI SERIES DIRECT / INDIRECT LED TROFFER

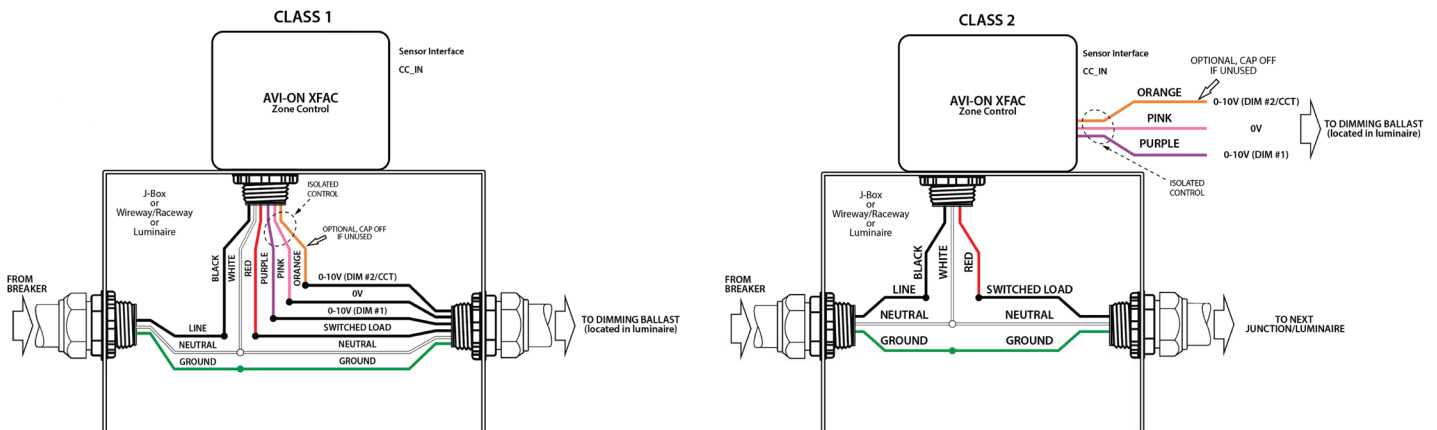
### CONTROL-XFAC SPEC



### SPECIFICATIONS

<b>INPUT VOLTAGE:</b>	100-277VAC	<b>RADIO FREQUENCY:</b>	50/60Hz
<b>CURRENT:</b>	MIN: 20 / 14mA MAX: 81 / 46mA	<b>RELAY CURRENT:</b>	16A
		<b>PROTECTION/IMMUNITY:</b>	LEVEL 4
<b>0-10V DIMMING:</b>	100-277VAC	<b>AMPERAGE FOR 0-10V LINES:</b>	Contact Discharge: ± 8kV Air Discharge: ±12kV
<b>SIZE:</b>	3.58" x 3.58" x 1.57" (91mm x 91mm x 40mm)	<b>WARRANTY:</b>	325mA / CH 5 years
<b>STORAGE TEMP:</b>	-40°F to + 185°F (-40°C to + 85°C)	<b>REGULATORY:</b>	FCC: 2AFZI-AVIBG21 IC: 20544-AVBG21
<b>OPERATING TEMP:</b>	-4°F to + 113°F (-20°C to + 45°C)		BQB: D059595, DID: 185220 UL 924, 2043

### WIRING DIAGRAM



### FEATURE

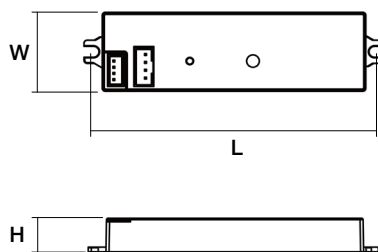
- **Installation:** Factory installed, 12V AUX power required
- **Commissioning:** Wirelessly through ALS Control Mobile App (iOS / Android)
- **Certification:** DLC 5.1 Networked Lighting Control System
- **Control:** Dimming, High-End Trim, Zoning, Continuous Bi-level Dimming
- **CCT Tuning:** CCT Tuning feature for Dual/Multi-CCT LED board fixture only
- **Sensor:** Plug-N-Play with ALS Control sensors
- **Zone Control:** Zoning and Grouping control, Scheduling



### SPECIFICATIONS

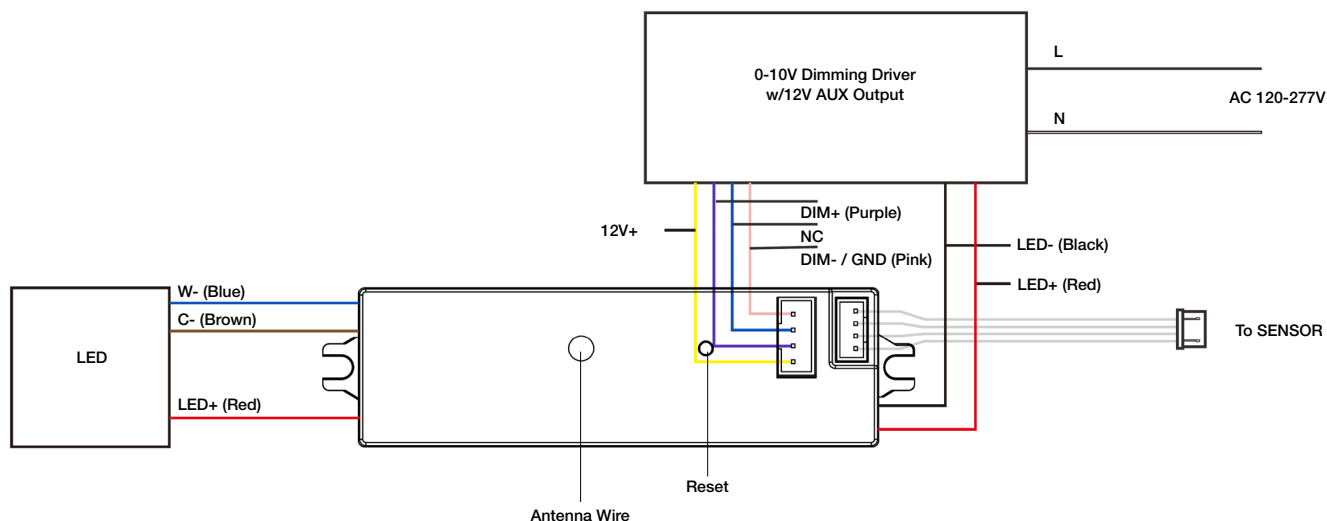
<b>WIRELESS STANDARDS:</b>	5.0 Bluetooth Mesh
<b>INPUT VOLTAGE:</b>	12-14VDC, >50mA
<b>OUTPUT VOLTAGE:</b>	LED Max. 150VDC Max. 2A
<b>CONTROL OUTPUT:</b>	0-10V
<b>OPERATING TEMP:</b>	-40°F ~ +158°F (-40°C ~ +70°C)
<b>COMMISSIONING RANGE:</b>	50FT
<b>BLUETOOTH RANGE:</b>	100FT
<b>WARRANTY:</b>	5 years
<b>IP RATING:</b>	IP20

### DIMENSIONS



L	H	W
3.5" (89mm)	0.43" (11mm)	1.00" (26mm)
Lead Wire		Antenna Wire
10.60" (270mm)		10.60" (270mm)

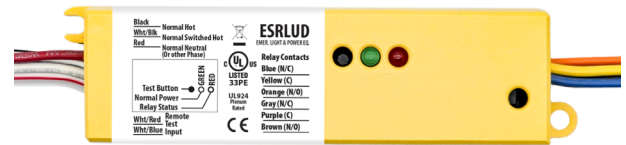
### WIRING DIAGRAM



## CONSTRUCTION

Yellow metal casing. Integrates with dry contact systems to provide lighting during power outages. Features a slim enclosure, allowing for seamlessly integrating into existing building infrastructure.

Designed for commercial and industrial applications that require an emergency load to be switched on during a loss of normal power.



## SPECIFICATIONS

<b>COIL CURRENT:</b>	Normal Power = 6mA MAX
<b>COIL VOLTAGE INPUT:</b>	120-277V AC (50/60 Hz)
<b>EXPECTED RELAY LIFE:</b>	10 Million Cycles Min Mechanical
<b>RELAY CONTACT RATINGS:</b>	10 Amp Resistive @ 30 V DC 10 Amp General Use @ 277 V AC
<b>OPERATING TEMP:</b>	-30°F ~ +140°F (-34°C ~ +60°C)
<b>OPERATE TIME:</b>	18ms
<b>HUMIDITY RANGE:</b>	5-95% (Noncondensing)
<b>LED:</b>	Green = Normal Power Red = Relay Status
<b>DIMENSIONS:</b>	1.40"H x 5.63"W x 1.00"D
<b>WIRES:</b>	16", 600V Rated
<b>OVERRIDE (TEST SWITCH):</b>	No
<b>APPROVALS:</b>	UL924, C-UL, CE, ROHS
<b>NOTES:</b>	Device Draws no Current From Emergency Source

## TESTING

<b>INITIAL TEST FOR CORRECT WIRING:</b>	Apply Normal Power To Normal Power Input a. Green LED (Normal Power) should be ON b. Red LED (Relay Status) should be ON c. Load should be OFF d. Relay Contact (N/O) should be CLOSED
<b>LOCAL TEST BUTTON:</b>	1. Turn Switched Circuit OFF. Load be OFF. 2. Press and Hold "Local Test Button" 3. Load should Turn ON 4. Release "Local Test Button" and Emergency Light should Turn OFF.
<b>WALL SWITCH:</b>	1. Turn ON Wall Switch If not already ON 2. Load should Turn ON 3. Turn Wall Switch OFF 4. Load will Turn OFF

## TROUBLESHOOTING

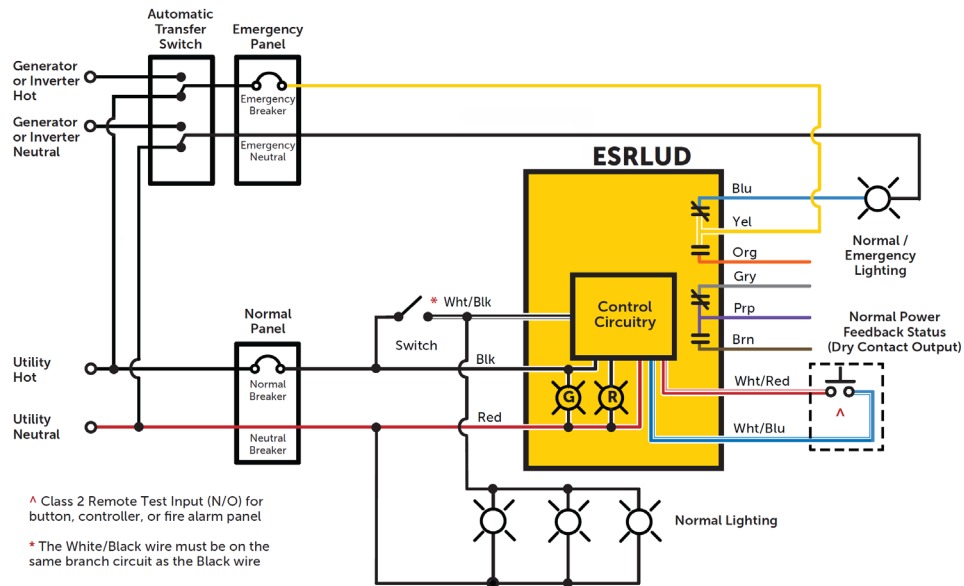
CONDITION	ACTION
Green LED is OFF	<ul style="list-style-type: none"> <li>Check Normal Power Input Wiring (Black and Red Wires) and Voltage.</li> </ul>
Red LED is OFF but Load is OFF	<ul style="list-style-type: none"> <li>Check Bulbs and Ballast.</li> <li>Check Load Wiring (Blue Wire and Load's Neutral).</li> <li>Replace Unit. (Assuming N/C Contact is Used).</li> </ul>
Load is ON but Red LED is ON	<ul style="list-style-type: none"> <li>Replace Unit. (Assuming N/C Contact is Used).</li> </ul>
Red LED does not Turn OFF and Load does not Turn ON when being tested	<ul style="list-style-type: none"> <li>Check Bulbs and Ballast.</li> <li>Check Wiring Connections if Using a Remote Test Option.</li> <li>Press Local Test Button on the Unit.</li> <li>Replace Unit.</li> </ul>
Red LED will not Turn ON and Load will not Turn OFF	<ul style="list-style-type: none"> <li>Verify Status of Normal Power Input.</li> <li>Open Wall Switch Input.</li> <li>Verify That No Test Inputs are Stuck Closed.</li> </ul>



## GTD-ESRLUD Generator Transfer Device

### WIRING DIAGRAM

#### USING EMERGENCY LIGHTING AS NORMAL LIGHTING



#### OVERRIDING A 0-10V DIMMER

