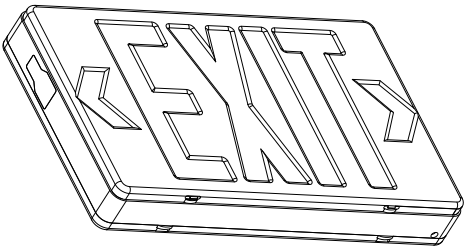


# INSTALLATION INSTRUCTIONS FOR LED COMBO EXIT/EMERGENCY LIGHT



## SAVE THESE INSTRUCTIONS IMPORTANT SAFEGUARDS:

When using electrical equipment, always adhere to basic safety precautions including the following:

### IMPORTANT

The battery in this unit may not be fully charged. After electricity is connected to unit, let battery charge for at least 24 hours, then normal operation of this unit should take effect. To check, press TEST button. The emergency LED lamps should illuminate. When re-lamping, use only LED lamps specified in the fixture. Using other lamp types may result in transformer damage or unsafe conditions.

### READ AND FOLLOW ALL SAFETY INSTRUCTIONS

1. Do not use outdoors.
2. Equipment should be mounted securely in locations and at heights where it will not be readily subjected to tampering by unauthorized personnel.
3. Do not mount near gas or electric heaters.
4. Cap unused wires with enclosed wire nuts or other approved method.
5. Do not use this equipment for anything other than its intended use.
6. The use of accessory equipment not recommended by the manufacturer will void product listing and warranty and may cause an unsafe condition.
7. Disconnect AC power before servicing and installation.
8. Consult local building code for approved wiring and installation.
9. Use caution when servicing batteries.
10. Any service on this equipment should be performed by qualified personnel only.
11. Make sure wire terminations are secure and leads are properly tucked in appropriate wire channels.

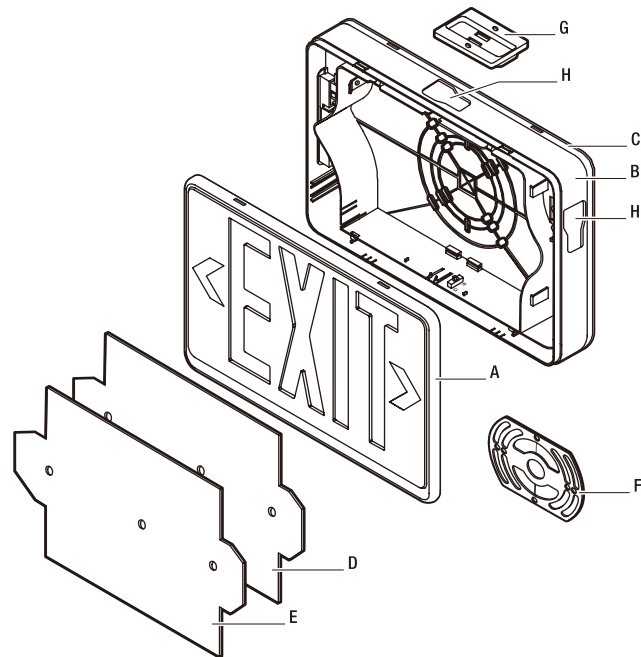
### Installation



#### IMPORTANT:

- Before beginning installation, turn off electricity by removing the fuse or turning off the circuit breaker. Disconnect power before servicing the product. All service should be performed by a qualified electrician.
- Before beginning assembly, installation, or operation of the product, make sure all parts are present. Changes or modifications to this unit not expressly approved by the party responsible for compliance could void the user's authority to operate the equipment.

### PACKAGE CONTENTS



Part	Description	Quantity
A	Face plate	2
B	Exit sign frame	1
C	Back plate	1
D	Red lens	2
E	Green lens	2
F	JBOX mounting plate	1
G	Canopy	1
H	Top/side access cap	2



Canopy screw



Wire nut



Wall anchor

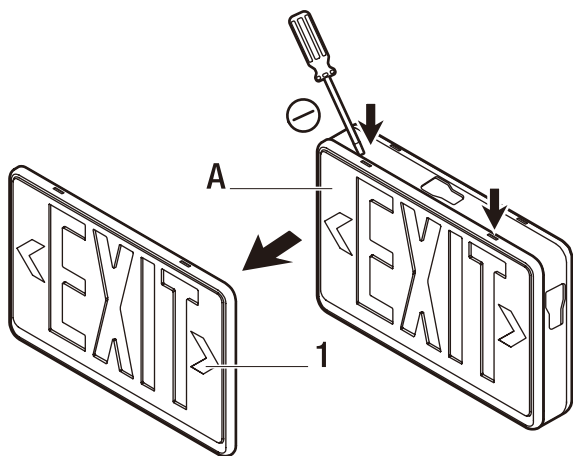


Mounting screw

# Installation

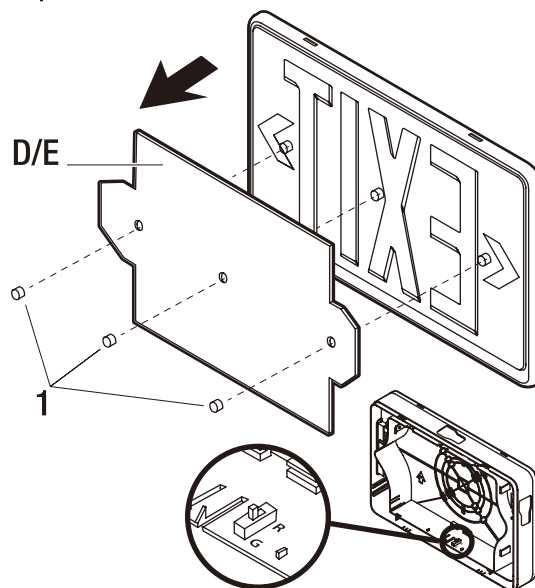
## 1 Preparing the exit light

- Remove the faceplate (A) using a flat screwdriver.
- Remove the appropriate arrow(s) (1) to indicate the direction of the exit.
- For double-sided applications, remove the backplate (C) using a screwdriver and replace it with the second faceplate (A). Double-sided applications can only be used with a ceiling or end mount.
- Plug in the back-up battery by connecting the battery lead to the PCB board.



## 2 Changing the color (optional)

- Remove the placard buttons (1) by twisting them back and forth while pulling up. Remove the preinstalled red lens.
- Insert the green lens (E) and replace the placard buttons by pressing them into place.
- Move the color selection switch to the "G" position.

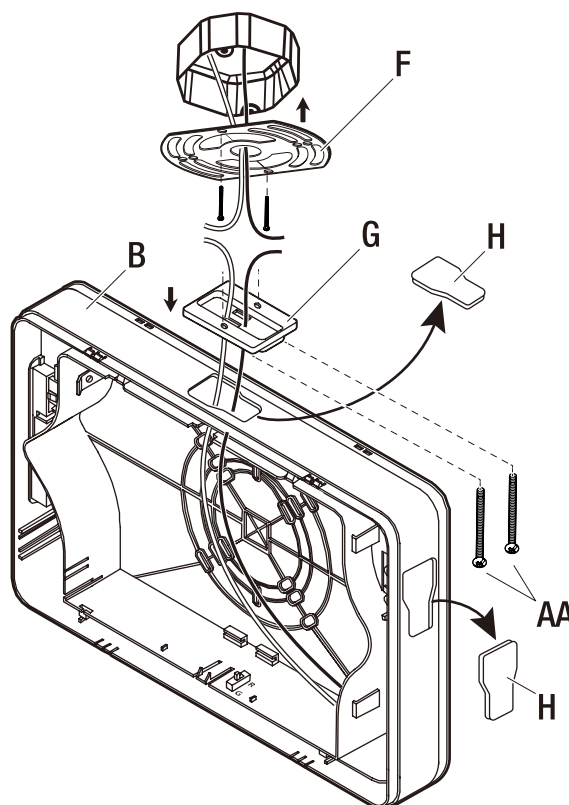


## 3 Installing the exit sign on a ceiling or end mount



**NOTE:** For wall mount applications proceed to Step 4.

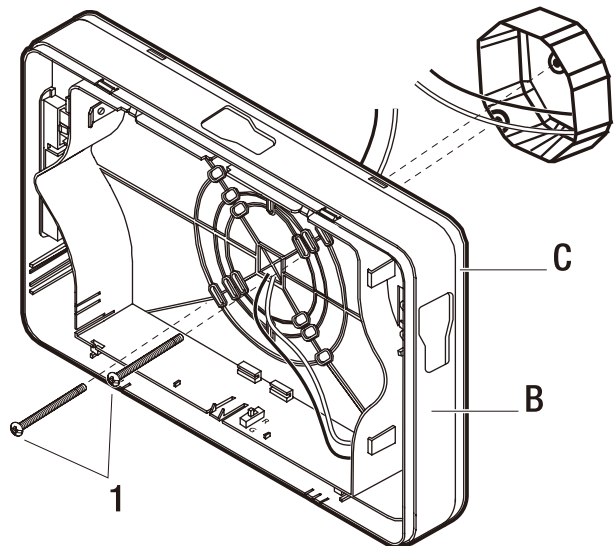
- Remove the top/side mount access caps (H) by pushing up and out from the underside.
- Pull the power supply wires from the junction box through the center hole of the JBOX mounting plate (F). Attach the JBOX mounting plate (F) to the junction box using the junction box screws (not included).
- Feed the fixture wires through the appropriate top or side mounting hole and through the canopy nose.
- Insert the canopy nose into the mounting hole on the exit sign frame (B) and lock it into place by rotating the canopy 90° and sliding to the right, into the locking flange, until it locks into place.
- Connect the wiring. Refer to "5 Connecting the wiring". Feed the wire nuts back through the center hole of the JBOX mounting plate (F) into the junction box.
- Thread the screws (AA) through the screw holes in the canopy (G) and attach the canopy to the JBOX mounting plate (F).



## Installation (continued)

### 4 Installing the exit sign to the wall

- Punch out the appropriate mounting pattern and wire hole on the backplate (C) to fit the junction box. Feed the wires through the wire hole.
- Connect the wiring. Refer to “5 Connecting the wiring”.
- Secure the frame (B) to the junction box using junction box screws. (Not Included) (1).

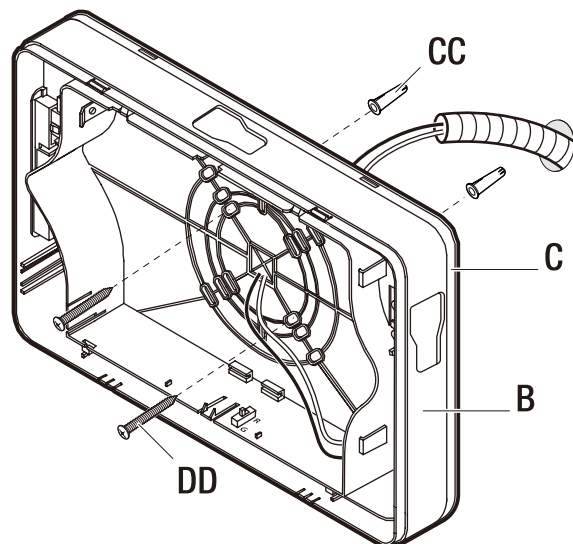


### 5 Installing the exit sign with conduit

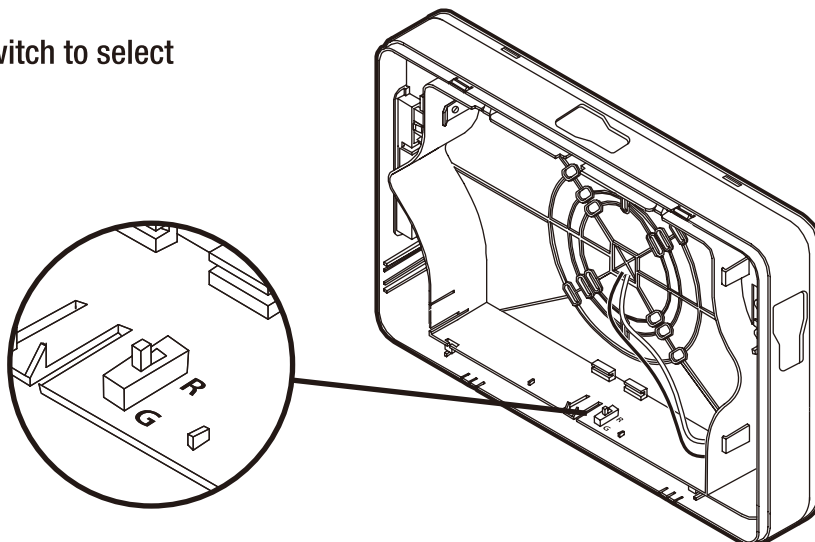


**WARNING:** This product must be installed in accordance with the applicable building codes, electric codes and ordinances. Be sure to comply with your local and state regulations. It is recommended that this product be installed by a licensed electrician or by qualified service personnel.

- Route the conduit power supply wires through the rear of the backplate (C) and make the conduit connection.
- Connect the wiring. Refer to “6 Connecting the wiring”.
- Using the backplate (C) as a template, mark and drill two installation holes on the wall at the desired installation location.
- Insert wall anchors (CC) into the holes.
- Attach the backplate (C) to the wall by inserting screws (DD) through the backplate (C) and into the wall anchors (CC).



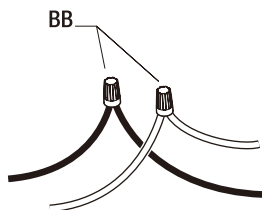
Use the color switch to select desired color



## Installation (continued)

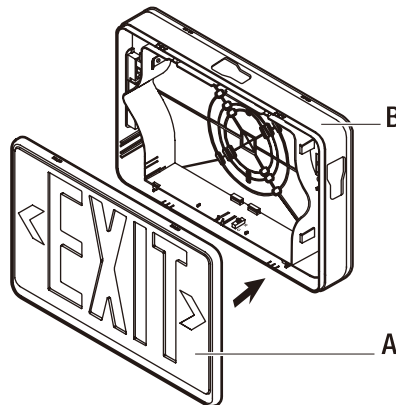
### 6 Connecting the wiring

- Make wire connections using the wire nuts (BB).
- For 120 V applications, use the black and white wires. Connect the black supply wire to the black fixture wire. Connect the white supply wire to the white fixture wire.
- For 277 V applications, use the red and white wires. Connect the red supply wire to the red fixture wire. Connect the white supply wire to the white fixture wire.
- Cap unused wires using a wire nut (BB).



### 7 Completing the installation

- Snap the faceplate(s) (A) onto the frame (B).
- Restore power to the circuit.
- Allow 24 hours for the back-up battery to fully charge.



## Maintenance



**NOTE:** National Electric Code (NEC) and NFPA life safety code regulations require that routine tests need to be performed.

### TESTING OPERATION

With AC Power applied to the unit, the EXIT sign and A/C Power LED indicator should illuminate. When pushing the TEST button, the LED indicator should turn off, the EXIT sign will remain illuminated.

### TESTING THE BATTERY

Test the unit's battery once per month. Additionally, every 12 months, a full 90-minute test should be performed. While disconnected from the main power supply, the EXIT sign should illuminate for a minimum of 90 minutes on battery back up power.

## Battery Replacement

This fixture uses a Ni-Cd Rechargeable AA700 mAh 4.8 V battery.

To remove the battery:

- Bend the battery catches away from the battery and remove the battery from the housing.
- Disconnect the battery leads from the board terminal.
- Connect the new battery to the board terminal.
- Place the new battery in the battery location and ensure it is seated behind the battery catches.

## Troubleshooting

Problem	Possible Cause	Solution
The LED charge indicator does not illuminate.	AC power supply is off.	Ensure the unit has AC power supply. Restore the power at the breaker/fuse box.
	The unit is incorrectly wired.	Ensure the unit is wired correctly.
	The battery isn't connected.	Ensure the battery is connected.