

TRDI SERIES DIRECT / INDIRECT LED TROFFER

Client:
 Project:
 Type:
 Quantity:

CONSTRUCTION

22-gauge metal frame, 95% reflective white polyester powder coat bonded to phosphate-free multi-stage pretreated metal. All parts painted after fabrication to facilitate installation, increase efficiency and inhibit corrosion. All corners are rounded for safe handling. Multiple wiring entrances on driver enclosure for easy access. Integral T-bar clips for installation into T-grid ceilings.

OPTICS

Edgelit design with semi-transparent optic lens offers exceptional direct / indirect distribution and maximum visual comfort.

ELECTRICAL

Long-life LEDs, coupled with a high-efficiency driver, provide superior illumination for extended service life. Greater than 70% LED lumen maintenance at 60,000 hours (L70>60,000).
 Selectable lumen and CCT technology allows easy field-adjustable capability, luminaire ships with maximum output and 4000K CCT setting.
 All CCTs are within 3 MacAdam ellipses.
 Driver operates at 120-277V input, 0-10V dimmable driver, down to 10%.

CONTROL (OPTIONAL)

CONTROL-XFAC AVI-ON Bluetooth Zone Controller Adapter

MOUNTING

Designed to accommodate lay-in ceilings, Slot T, and T-bar suspension system for 5/8" and 3/8" width.
 Built-in earthquake clips come standard.
 Plaster or sheetrock installations, select flange kit.

STANDARD FINISH

High Reflective White finish.

CERTIFICATION

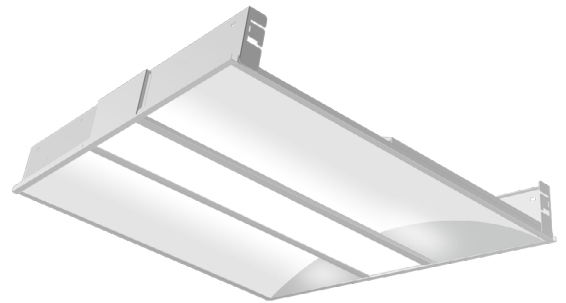
Damp location label standard.
 Meets Buy America Act requirements.
 US Patented Product
 All luminaires are built to UL1598 standards and bear appropriate cULus labels.
 For Emergency application, equipment with UL924 certified battery packs.
 DLC[®] Premium (DesignLights Consortium Qualified).

WARRANTY

5 year warranty, see Limited Warranty for additional information.



TRDI-2



SHIPPING DATA

Product	Measurement	Weight
TRDI-2	24"L x 24"W x 8"H	6 lb
TRDI-4	48"L x 24"W x 8"H	14 lb



TRDI SERIES DIRECT / INDIRECT LED TROFFER

ORDER INFORMATION **EXAMPLE: TRDI 2**

Fixture	Series	Model	Finish	Input
	TRDI		blank	blank

Mounting

Accessories
Options

A SERIES

TRDI Selectable Lumen and CCT Direct / Indirect LED Troffer

B MODEL

Code	Size	Power	CCT	Output
2	2x2	20W / 30W / 40W	3000K / 3500K / 4000K	up to 4400lm
4	2x4	30W / 40W / 50W	3000K / 3500K / 4000K	up to 5500lm

C FINISH

blank White

D INPUT

blank 120-277V, 0-10V Dimming

G MOUNTING

blank	Standard lay-in
MOUNT-LP-22-FGK	2x2 Flange Kit (Plaster, Sheetrock or Drywall)
MOUNT-LP-24-FGK	2x4 Flange Kit (Plaster, Sheetrock or Drywall)

H ACCESSORIES/OPTIONS

AIA	Assembled in America, compliant with BAA (COTS)
EMB-H08170**	Self-Diagnostic High Voltage Output Emergency Battery 8W 100-347VAC Input 170VDC Output
EMB-H18170**	Self-Diagnostic High Voltage Output Emergency Battery 18W 100-347VAC Input 170VDC Output
EMB-H40170**	Self-Diagnostic High Voltage Output Emergency Battery 40W 100-347VAC Input 170VDC Output
CONTROL-XFAC*	AVI-ON Bluetooth Zone Controller Adapter
-C	6-Foot Flex

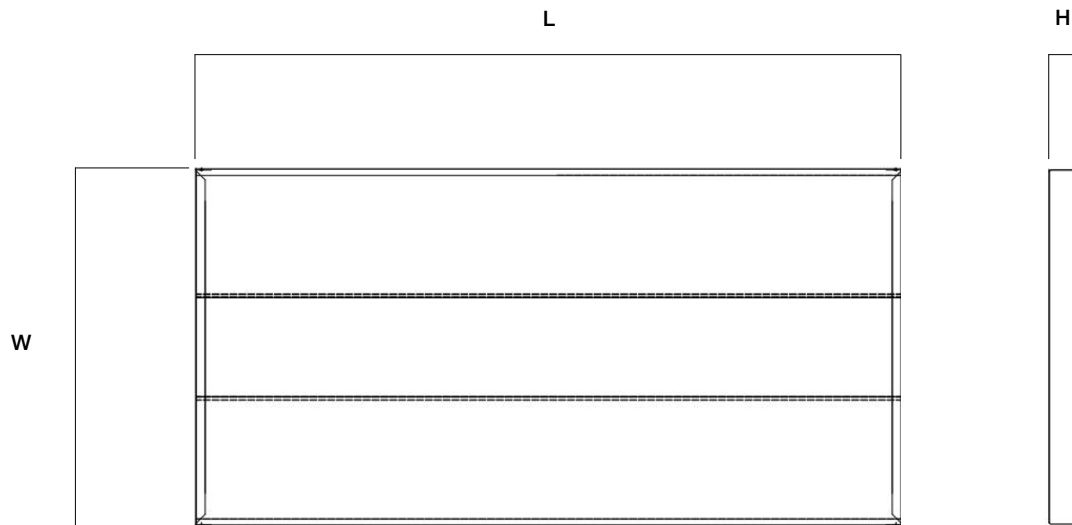
*see page 4 for sensor spec

**see page 5 for emb spec

TRDI SERIES DIRECT / INDIRECT LED TROFFER

DIMENSIONS

Model	W	L	H
TRDI-2	23.76" (603mm)	23.76" (603mm)	3.5" (89mm)
TRDI-4	23.76" (603mm)	47.80" (1213mm)	3.5" (89mm)



TRDI SERIES DIRECT / INDIRECT LED TROFFER

PERFORMANCE DATA

SYSTEM WATTS	SIZE	VOLTAGE	LUMEN	LPW	QTY ON PALLET
20W	2x2	120-277V	2200	110	70
30W	2x2	120-277V	3300	110	70
40W	2x2	120-277V	4400	110	70
30W	2x4	120-277V	3300	110	40
40W	2x4	120-277V	4400	110	40
50W	2x4	120-277V	5500	110	40

SENSOR SPEC

Model	Type	Mounting	Coverage	Input	Function	Programmable
CONTROL-XFAC (see page 6 for detail)	Fixture Controller	-	-	100-277VAC	Bluetooth On/Off/Dimming Scheduling	AVI-ON Bluetooth Mobile App

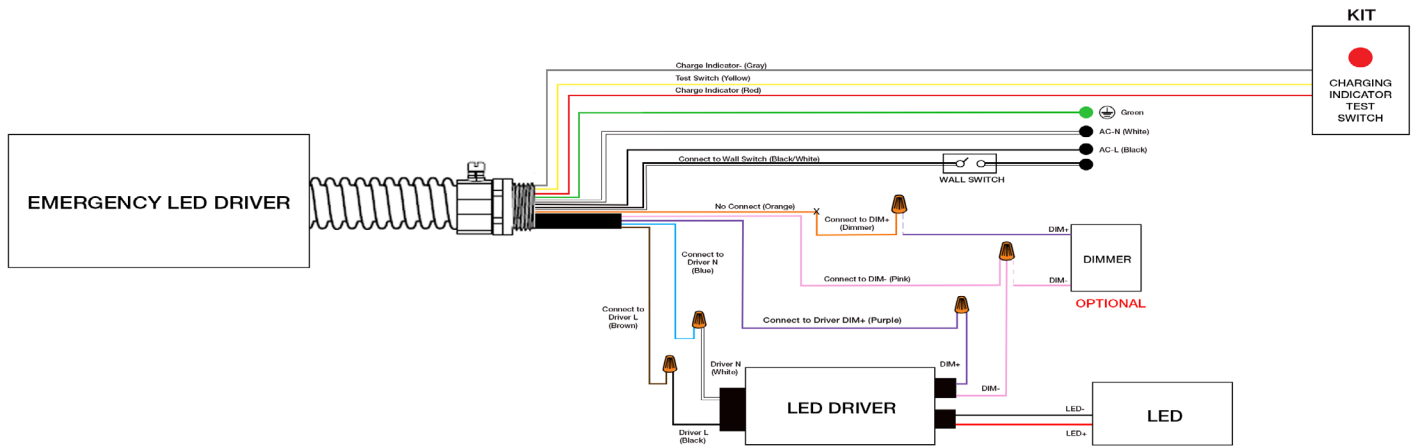


CONTROL-XFAC

TRDI SERIES DIRECT / INDIRECT LED TROFFER

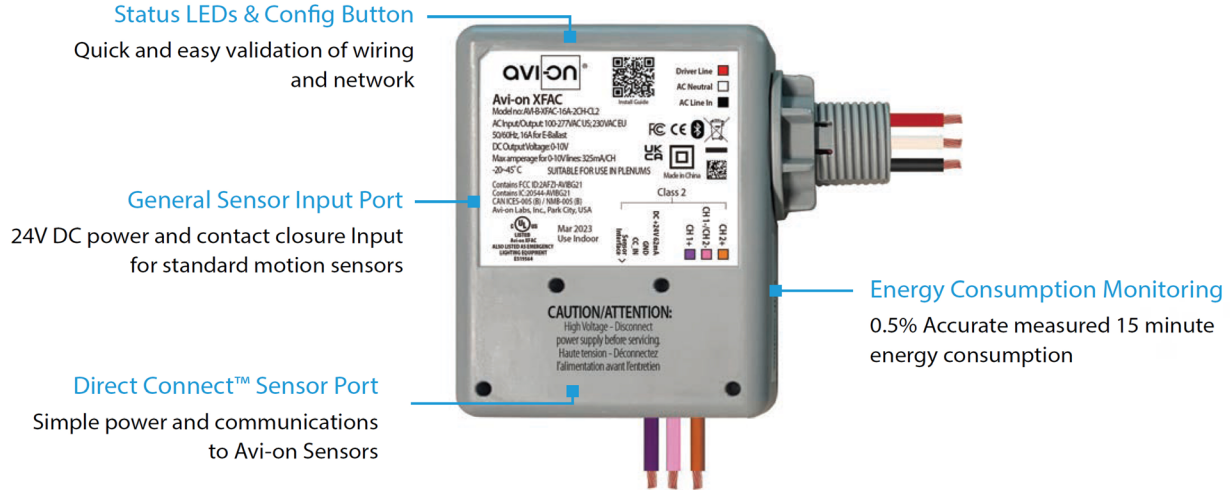
EMB SPEC

Model	Compatible Fixture	Battery Capacity	Input	Output	Output Power	Operating Temp	Installation
EMB-H08170	TRDI-2	90mins	100-347VAC	170VDC	8W	0°C ~ 50°C 32°F ~ 122°F	Factory or Field Install
	TRDI-4						
EMB-H18170	TRDI-2	90mins	100-347VAC	170VDC	18W	0°C ~ 50°C 32°F ~ 122°F	Factory or Field Install
	TRDI-4						
EMB-H40170	TRDI-2	90mins	100-347VAC	170VDC	40W	0°C ~ 50°C 32°F ~ 122°F	Factory or Field Install
	TRDI-4						



TRDI SERIES DIRECT / INDIRECT LED TROFFER

CONTROL-XFAC SPEC



SPECIFICATIONS

INPUT VOLTAGE: 100-277VAC
CURRENT: MIN: 20 / 14mA
 MAX: 81 / 46mA

0-10V DIMMING: 100-277VAC
SIZE: 3.58" x 3.58" x 1.57"
 (91mm x 91mm x 40mm)
STORAGE TEMP: -40°F to + 185°F (-40°C to + 85°C)
OPERATING TEMP: -4°F to + 113°F (-20°C to + 45°C)

RADIO FREQUENCY: 50/60Hz
RELAY CURRENT: 16A
PROTECTION/IMMUNITY: LEVEL 4

AMPERAGE FOR 0-10V LINES: Contact Discharge: ± 8kV
 Air Discharge: ±12kV
 325mA / CH
WARRANTY: 5 years
REGULATORY: FCC: 2AFZI-AVIBG21
 IC: 20544-AVBG21
 BQB: D059595, DID: 185220
 UL 924, 2043

50/60Hz
 16A
 LEVEL 4
 Contact Discharge: ± 8kV
 Air Discharge: ±12kV
 325mA / CH
 5 years
 FCC: 2AFZI-AVIBG21
 IC: 20544-AVBG21
 BQB: D059595, DID: 185220
 UL 924, 2043

WIRING DIAGRAM

